



Churchend Stables

Tidenham, Chepstow, NP16 7JF

£1,650 PCM



Description

* Detached Barn Conversion * Three Bedrooms * Kitchen/Dining Room with Integrated Double Oven and Grill, Extractor Fan Hood, Fridge Freezer and Dishwasher * Living Room * Large Utility/Study Area * Cloakroom/W.C. * Bathroom with Shower Over Bath * Large Garden * Driveway Parking * LPG Gas * Under Floor Heating on Ground and First Floor * Wooden Double Glazing * Unfurnished * Available Now *

Monthly Rent: £1650.00 per month

Deposit: £1903.00

Holding Deposit: £380.00

Building Materials: Stone

Sewerage Supply: TBC

Broadband Coverage: Ofcom - up to 1000mbps

Mobile Coverage: Most carriers - Variable outdoors /Variable indoors

Utility Supplies: Electrical Supply

Water Supply: Mains

Parking Status: Driveway area

Restrictions - No known restrictions & rights

Accommodation

OPEN PLAN DINING/KITCHEN AREA

22'4" x 11'2"

Oak flooring and skirting. Slate window sill. Smoke alarm. Useful understairs storage cupboard. Kitchen Area Fitted with an attractive range of base and wall cupboards with worktops, integral dishwasher and refrigerator, inset stainless steel 1½ bowl sink unit with chrome mixer tap, built-in stainless steel 4-ring electric hob with matching stainless steel electric double oven below and cooker hood over, extensive wall tiling, slate flooring, spot lighting, telephone point.

KITCHEN AREA

STUDY/UTILITY

11'2" x 11'2"

Slate flooring, hardwood double glazed door to front, telephone point, wall mounted LP gas combination central heating boiler supplying central heating and hot water, plumbing for automatic washing machine and venting for tumble dryer, built-in cupboard housing electric consumer unit.

CLOAKROOM

With low level close coupled wc., vanity wash hand basin, fully mosaic tiled walls, slate flooring.

SITTING ROOM

14'0" x 10'8"

Entered via double doors from the Dining Area. With oak flooring and skirting boards, multi fuel stove on raised slate hearth, exposed ceiling beams, oak window and door lintels. Dual Aspect.

STAIRS AND LANDING

Oak flooring and skirting boards, linen cupboard.

BEDROOM 1

11'6" x 9'5"

Oak flooring and skirting boards. Range of built-in bedroom furniture including wall cupboards, bedside cabinets, chest of drawers and double wardrobe, telephone point. TV point. Stable type door opening onto: SUN DECK BALCONY AREA With stone steps to ground floor.

BEDROOM 2

11'6" x 8'10"

Oak flooring and skirting boards, built-in bedroom furniture including wall cupboards, chest of drawers, dressing table/computer desk and two wardrobe units, telephone point, TV point. Access to loft space.

BEDROOM 3

8'2" x 8'0"

'L' Shaped. Oak flooring and skirting boards, built-in bedroom furniture including wardrobe, two wall cupboards and chest of drawers.

BATHROOM

With white suite of panelled bath with shower over, extractor fan, high level wc., wash hand basin, fully mosaic tiled walls, tiled floor, heated chrome ladder style towel rail and a range of built-in bathroom cabinets.

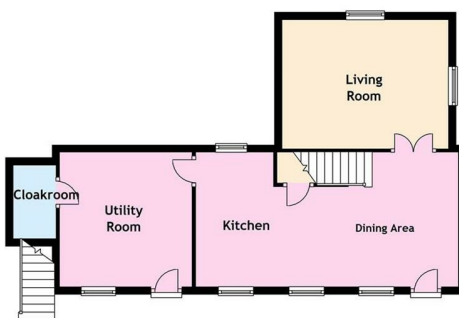
OUTSIDE

The property is approached by a long gravelled driveway and flanked by an open field. Lawned gardens to both sides and rear, well enclosed with post and rail fencing, stone walling and gates. Large brick patio terrace area, large recently laid flagstone courtyard area. Gravelled parking area to side. Outside lighting. Outside tap. Useful timber built garden shed.

DIRECTIONS

From Chepstow take the A48 road towards Lydney. A little way after passing the Diving Centre on the left hand side, take the turning left for 'Tidenham' (¼ mile). Carry on up this lane for approximately half a mile and the entrance is on the left hand side, just before a stone built lodge. Proceed down the driveway to the property.

Ground Floor



First Floor

